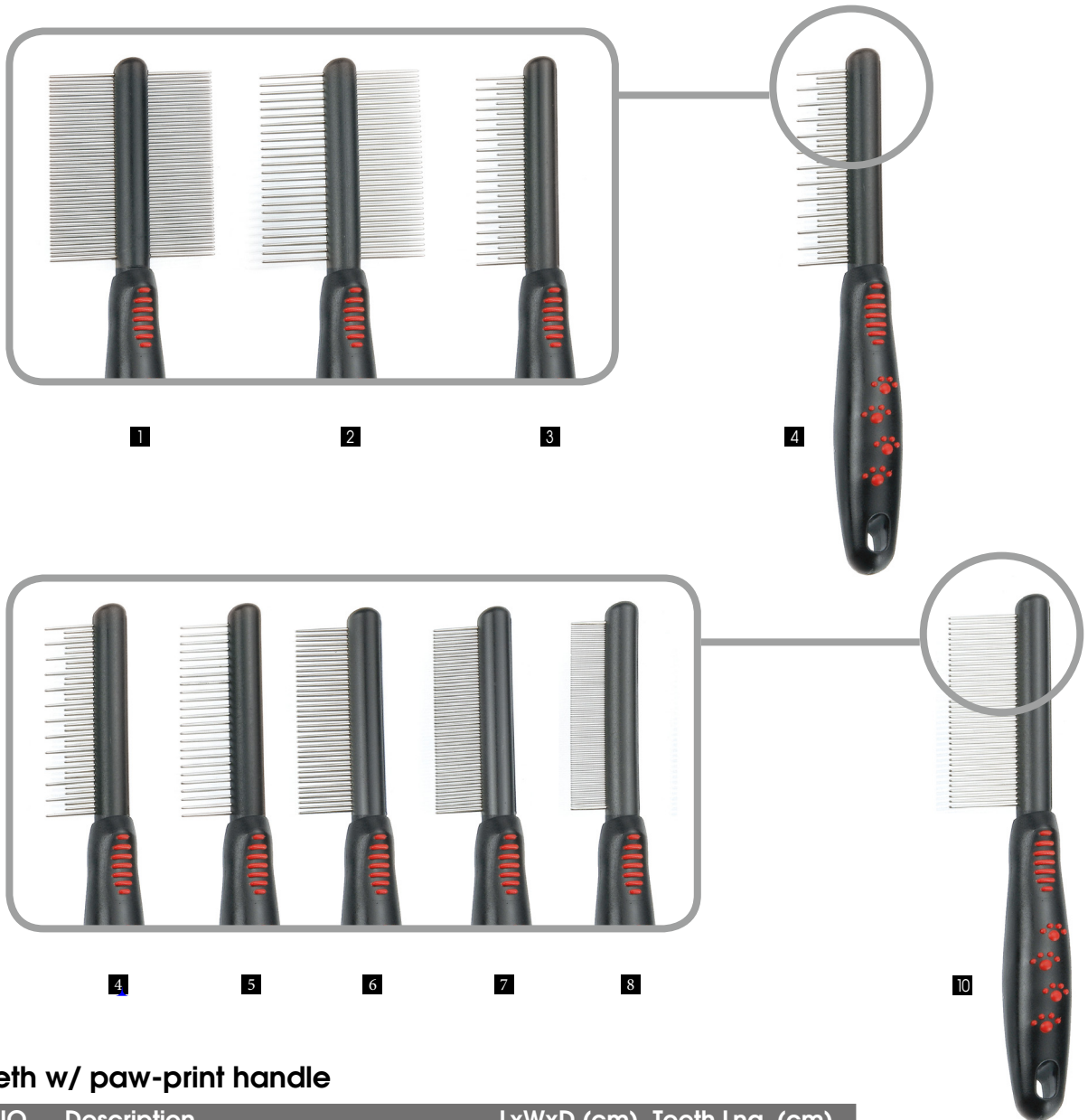




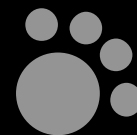
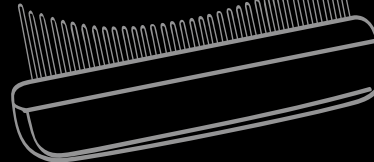
Handled Combs

Handled combs are available in several sizes to fit all coat types. Each comb features non-slip finger and thumb rests for extra control. 24-teeth combs are better for breeds with very thick, dense coats. 37-teeth and 58-teeth combs are best for dogs with soft, silky, fine-to medium-textured hair. 70-teeth and 78-teeth combs remove any last traces of tangle, and they also double as flea combs to help remove parasites fleas and dirt when present.



* Fixed teeth w/ paw-print handle

Item NO.	Description	LxWxD (cm)	Teeth Lng. (cm)
1	14DADFA 2-sided teeth, extra fine (48 +54 teeth)	21.8x6.3x2.5	2.5/2.5
2	14DADA 2-sided teeth (24 coarse+37 fine teeth)	21.8x6.3x2.5	2.5/2.5
3	14DALSA shedding comb (19 long+18 short teeth)	21.8x3.8x2.5	2.0/1.0
4	14DALDA shedding comb (13 long+24 short teeth)	21.8x3.8x2.5	2.0/1.0
5	14DA24A 24-teeth	21.8x4.0x2.5	2.0
6	14DA37A 37-teeth	21.8x4.0x2.5	2.0
7	14DA56A 56-teeth	21.8x4.0x2.5	2.0
8	14DA90A 90-teeth	21.8x3.5x2.5	1.4
9	14DA24EA 24-long teeth	21.8x4.7x2.5	2.5
10	14DA37EA 37-long teeth	21.8x4.5x2.5	2.5
11	14DA90EA 90-long teeth	21.8x4.0x2.5	2.0

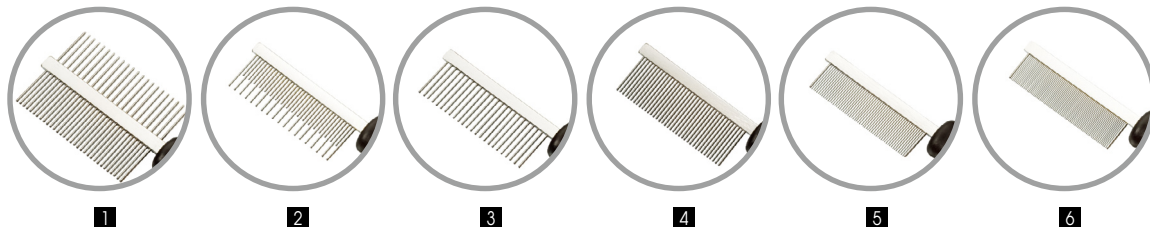


Handled Combs

Electroplating: (Finishes)

CP= Chrome Plated.

ED= Electro Coated



1

2

3

4

5

6

COMBS



4

* seahorse style handle

Item NO.	Description	LxWxD (cm)	Teeth Lng. (cm)
1 14KADA	2-sided teeth (22 coarse+32 fine teeth), CP	20.0 x 5.2x1.2	2.3/2.3
2 14KALSA	shedding comb (19 long+18 short teeth), CP	19.7 x 3.2x1.2	2.3/1.4
3 14KA24A	24-teeth, CP	19.7 x 3.2x1.2	2.3
4 14KA37A	37-teeth, CP	19.7 x 3.2x1.2	2.3
5 14KA58A	58-teeth, CP	19.5 x 2.6x1.2	1.7
6 14KA70A	70-teeth, CP	19.5 x 2.6x1.2	1.7
7 14KA78A	78-teeth, CP	19.5 x 2.6x1.2	1.7

* bowling pin-style handle

Item NO.	Description	LxWxD (cm)	Teeth Lng. (cm)
1 14LADA	2-sided teeth (22 coarse+32 fine teeth), CP	19.5 x 5.3x1.4	2.3/2.3
2 14LALSA	shedding comb (19 long+18 short teeth), CP	19.5 x 3.8x1.4	2.3/1.4
3 14LA24A	24-teeth, CP	19.0 x 3.8x1.4	2.3
4 14LA37A	37-teeth, CP	19.0 x 3.8x1.4	2.3
5 14LA58A	58-teeth, CP	19.0 x 3.5x1.4	1.7
6 14LA70A	70-teeth, CP	19.0 x 3.5x1.4	1.7
7 14LA78A	78-teeth, CP	19.0 x 3.5x1.4	1.7



1

* V-style handle

Item NO.	Description	LxWxD (cm)	Teeth Lng. (cm)
1 14HBDA	2-sided teeth (22 coarse+32 fine teeth), CP	19.8 x 5.1x1.8	2.3/2.3
2 14HBLSA	shedding comb (19 long+18 short teeth), CP	19.0 x 3.9x1.8	2.3/1.4
3 14HB24A	24-teeth, CP	19.0 x 3.9x1.8	2.3
4 14HB37A	37-teeth, CP	19.0 x 3.9x1.8	2.3
5 14HB58A	58-teeth, CP	19.0 x 3.5x1.8	1.7
6 14HB70A	70-teeth, CP	19.0 x 3.5x1.8	1.7
7 14HB78A	78-teeth, CP	19.0 x 3.5x1.8	1.7



7