



Palm-style Pin Brushes

Palm-style pin brushes are specially designed to remove tangles and stimulate the skin's oil glands. Each brush features an elastic hand strap for ease of use, and is ideal for left or right-handed groomers.



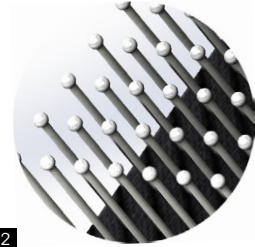
Avoid scratching skin



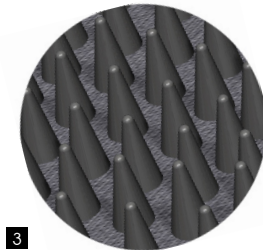
Flexible!



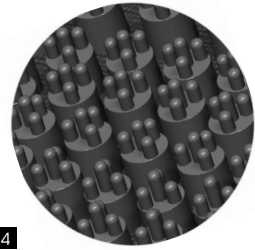
1 Stainless steel



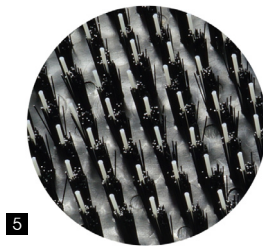
2 Stainless steel w / tip



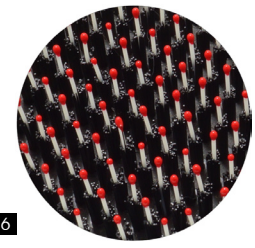
3 Rubber pin (Normal type)



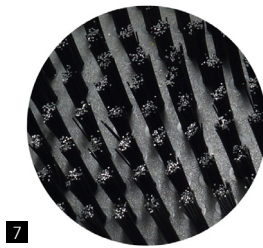
4 TPR pin (Sensitive type)



5 Hedgehog- pin



6 Hedgehog- pin w / tip



7 Nylon

Product Dimensions (L x W x D):
13.2 x 8 x 3 cm

Item No.	Description
1 66A11A	Stainless steel
2 66A11A8	Stainless steel w / tip
3 66A11H	Rubber pin (Normal type)
4 66A11L	Rubber pin (Sensitive type)
5 66A11M	Hedgehog- pin
6 66A11M8	Hedgehog- pin w / tip
7 66A11B	Nylon

