

Flat Slickers Stainless-steel Pins

Flat slickers have rounded corners that will not catch fur and are fine for fine, delicate coats. Fine, dense-set bristles make these slickers soft and flexible. Stainless steel pins gently penetrate deep into the coat. Non-slip handles are comfortable.



(A) Soft pins (gray pin pad)

(B) Soft pins w/ tips (gray pin pad)

(C) Hard Pins (black pin pad)

Item No.	Size
A1 16DA1AXL	XL
A2 16DA1AL	L
A3 16DA1AM	M
A4 16DA1AS	S
A5 16DA5AS	SS

Item No.	Size
B1 16DA1A8XL	XL
B2 16DA1A8L	L
B3 16DA1A8M	M
B4 16DA1A8S	S

Item No.	Size
C1 16DA1BXL	XL
C2 16DA1BL	L
C3 16DA1BM	M
C4 16DA1BS	S

Product Dimensions(L x W x D):
X-Large: 18.0 x 11.0 x 3.8 cm
Large: 14.5 x 11.0 x 3.5 cm
Medium: 14.5 x 9.0 x 3.0 cm
Small: 14.5 x 6.4 x 3.0 cm

BRUSHES



A1

A2

A3

A4

(A) Soft pins (gray pin pad)

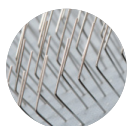
(B) Soft pins w/ tips (gray pin pad)

(C) Hard Pins (black pin pad)

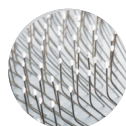
Item No.	Size
A1 16DA4AXL	XL
A2 16DA4AL	L
A3 16DA4AM	M
A4 16DA4AS	S

Item No.	Size
B1 16DA4A8XL	XL
B2 16DA4A8L	L
B3 16DA4A8M	M
B4 16DA4A8S	S

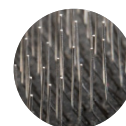
Item No.	Size
C1 16DA4BXL	XL
C2 16DA4BL	L
C3 16DA4BM	M
C4 16DA4BS	S



(A) Soft pins (gray pin pad)



(B) Soft pins w/ tips (gray pin pad)



(C) Hard pins (black pin pad)